

## VN-Roof AH ATEX



### ATEX axial roof fan horizontal outlet

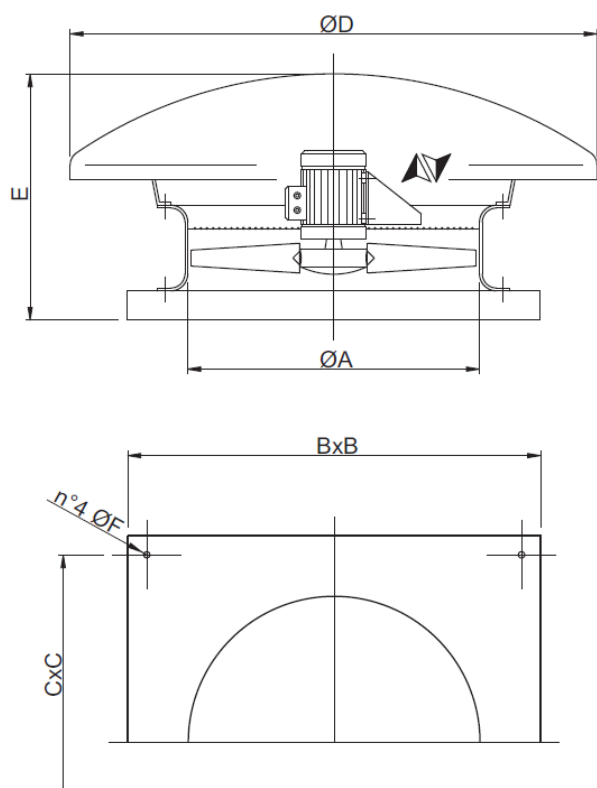
The information below covers the standard range. The possibilities are extensive and besides the diameter of the impeller and speed, also the fan can be configured by different types of impellers, the angle of the impeller and the motor power.

If you are looking for a fan with a specific working point, please don't hesitate to contact us by phone +31 (0)416 391999 or email [info@ventinet.nl](mailto:info@ventinet.nl) and we will select the right fan for you.

Sizes	400 up to 1.000 mm
Motor	Atex motor IP55, 230/1/50 of 400/50
Capacity	up to 60.000 m <sup>3</sup> /h
Pressure	up to 750 Pa
Control	Frequency converter
Casing	Steel / Aluminum / Stainless steel
Impeller	Plastic / Aluminum
Airflow	Motor → Impeller (supply) / Impeller → Motor (extract)
Extra	Airflow 100 % reversible possible Motors for different voltages, frequencies and with certificates
Atex	Gas : zone 1 II2G and 2 II3G    Dust on request: zone 21 II2D and 22 II3D
Accessories	Protection grid / Silencer/ Shutters / Switches/ Terminal box / Roof mounting kit / Frequency converter s

*More information about the capacities and pressures on request*

## Indication dimensions VN-Roof AH ATEX



Model	$\varnothing A$	$B \times B$	$C \times C$	$\varnothing D$	$E$	$\varnothing F$
45	460	650	600	1000	450	10
50	510	760	710	1000	450	10
56	570	760	710	1000	450	10
63	640	930	870	1200	500	10
71	710	930	870	1200	500	10
80	815	1150	1050	1600	650	12
90	915	1300	1200	1600	650	12
100	1015	1300	1200	1600	700	12